

KLIMA



Text block under KLIMA, containing several lines of small text.



Text block under KLIMA, containing several lines of small text.

Text block under KLIMA, containing several lines of small text.

WANDEL



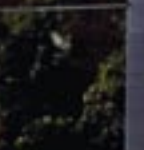
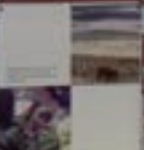
SICHERHEIT

RESSOURCEN



Text block under RESSOURCEN, containing several lines of small text.

Text block under RESSOURCEN, containing several lines of small text.



LEBEN

ZUGANG

The exhibition "Environment, Conflict and Cooperation" visualizes the dramatic impacts of global environmental change. It was conceived and realized by Adelphi Research, Adelphi Consult, and Weltformat Design at the initiative of the German Foreign Ministry. Using the subjects of water, climate, land, forests and minerals, the exhibition shows the way in which environmental degradation and resource scarcity lead to conflicts and new security threats, but also how environmental cooperation and sustainable development can contribute to peace and stability. This exhibition focuses on three questions:

Why do changes in our natural environment threaten human security?

Does the exploitation of natural resources lead to violent conflict?

How can sustainable development and environmental cooperation contribute to stability and peace?

ENVIRONMENT CONFLICT AND COOPERATION

The aim of the exhibition is to foster an understanding for the topic among the interested public. Informative texts, pictures and charts convey to the visitor the complex content by giving specific examples. Video and audio features as well as interactive animations complement the picture walls.

The exhibition is conceived as a touring exhibition and will be displayed around the world in the next years.

You can book this exhibition!

Show "Environment, Conflict and Cooperation" at your venue – whether it is a company, school, public agency, educational institution or information point – for example in the context of a conference, open day or for a special event.

The modular concept of this exhibition allows its structure to be adapted to your spatial requirements and the enlargement of its content with your specific topics. The exhibition is already available in German and English; additional language options are being prepared. Its physical structure is packed in a way that facilitates transport and is very simple to assemble.

The accompanying brochure of the exhibition can be printed and supplied in German and English in any required number. We would be happy to offer you accompanying events, such as presentations, panel discussions or conferences.

Are you interested in booking the exhibition? Then please contact us, we will put together an individualized package for you.

Your contact person is:

Gregor Gruettner | Adelphi Research
Caspar-Theyss-Strasse 14a | D-14193 Berlin
Fon: +49 (30) 89 000 68 12 | Fax: +49 (30) 89 000 68 10
E-mail: gruettner@adelphi-research.de
For pictures of the exhibition and further information:
www.ecc-exhibition.org



